

## Pottery Glaze Layering Combinations

Layer Pottery Glazes to create unique effects and a different look every time. Here are just a few of the endless color combinations created by layering Pottery Glazes and Specialty Glazes. To create the looks below, start with 3 base coats of either a Specialty Glaze or a Pottery Glaze to the entire bisque piece, let dry, and apply 3 coats of Pottery Glaze to the top portion of the mug. Fire to cone 06 and let the magic happen!



NTG-9516 x  
Midnight Stone



NTG-9522 x  
Ocean Mist



SC-2600 x  
White Board



NTG-9539 x  
Lobster Fest



NTG-9216 x  
Ebony



NTG-9319 x  
Pottery Peacock



SC-2607 x  
Honeydew Melon



NTG-9322 x  
Speckled Forest



SC-2606 x  
Memo Pad



NTG-9528 x  
Sandalwood



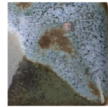
NTG-9513 x  
Red Rock



NTG-9528 x  
Sandalwood



NTG-9514 x  
River Stone



NTG-9555 x  
Magic Flow



NTG-9528 x  
Sandalwood



NTG-9516 x  
Midnight Stone



NTG-9516 x  
Midnight Stone



NTG-9517 x  
Pottery Patina



NTG-9319 x  
Pottery Peacock



SC-2609 x  
Black Top



NTG-9316 x  
Mud Slide



SC-2609 x  
Black Top



NTG-9511 x  
Prairie Gold



NTG-9517 x  
Pottery Patina



SC-2609 x  
Black Top



NTG-9528 x  
Sandalwood



NTG-9516 x  
Midnight Stone